



# PUNCHING REFERENCE CHART

## Agricultural Elevator Buckets

AGRICULTURAL BUCKETS: PUNCHING REFERENCE CHART

Punching For Agricultural Elevator Buckets: Standard Hole Centers

BUCKET SIZE, INCHES	Maxi-lift Inc.®			Dura-Buket®		CC-S	CCHD	CC-B Steel	
	TIGER-TUFF HEAVY DUTY ELEVATOR BUCKETS	HD-MAX HEAVY DUTY BUCKETS	CC-MAX	SS	LP				
3 x 2	SEE HD-MAX/ CC-MAX	1-3/4	1-3/4	-	-	1-3/4	1-3/4	-	
4 x 3		2-1/4	2-1/2	2-1/4	2-1/4	2-1/2	2-1/2	2-1/2	
5 x 4		3-3/16	3-3/16	3-3/16	3-3/16	3-3/16	3-3/16	3-3/16	
6 x 4		4-3/8	4-3/8	4-3/8	4-3/8	4-3/8	4-3/8	4-3/8	
7 x 4		2-5/8	2-11/16	2-11/16	2-11/16	2-5/8	2-11/16	2-11/16	
6 x 5		4-3/8	4-3/8	4-3/8	4-3/8	4-1/4	4-3/8	4-3/8	
7 x 5		2-5/8	2-11/16	2-11/16	2-5/8	2-5/8	2-11/16	2-11/16	
8 x 5		3-1/16	3-1/16	3-1/16	3-1/16	3-1/16	3-1/16	3-1/16	
9 x 5		3-1/2	3-5/8	3-5/8	3-1/4	3-1/4	3-5/8	3-5/8	
10 x 5		4	4-1/8	4-1/8	-	-	4-1/8	4-1/8	4-1/8
11 x 5		3-1/8	3	3	-	-	3	3	3
12 x 5		3-3/8	3-3/8	3-3/8	-	-	3-3/8	3-3/8	3-3/8
8 x 6		3-1/16	3-1/16	3-1/16	3-1/16	2-11/16	3-1/16	3-1/16	3-1/16
9 x 6		3-1/2	3-5/8	3-5/8	3-1/2	3-1/2	3-5/8	3-5/8	3-5/8
10 x 6		4	4-1/8	4-1/8	4	4	4-1/8	4-1/8	4-1/8
11 x 6		3	3	3	3	2-7/8	3	3	3
12 x 6		3-3/8	3-3/8	3-3/8	3-3/8	3-1/4	3-3/8	3-3/8	3-3/8
13 x 6		3-5/8	3-5/8	3-5/8	3-5/8	3-5/8	3-5/8	3-5/8	3-5/8
10 x 7		4	4-1/8	4-1/8	4	4	4-1/8	4-1/8	4-1/8
11 x 7		3	3	3	3	3	3	0	3
12 x 7		3-3/8	3-3/8	3-3/8	3-3/8	3-1/4	3-3/8	3-3/8	3-3/8
13 x 7		3-5/8	3-5/8	3-5/8	3-5/8	3-5/8	3-5/8	3-5/8	3-5/8
14 x 7	3	3	3	3	4	3	3	3	
15 x 7	3-1/4	3-1/4	3-1/4	3-1/4	2-5/8	3-1/4	3-1/4	3-1/4	
16 x 7	2-7/8	3-1/2	2-7/8	3-1/2	2-5/8	2-7/8	2-7/8	2-7/8	
10 x 8	-	4-1/8	4-1/8	-	-	4-1/8	4-1/8	4-1/8	
11 x 8	-	3-1/8	3	-	-	3	3	3	
12 x 8	3-3/8	3-3/8	3-3/8	3-3/8	3-1/4	3-3/8	3-3/8	3-3/8	
13 x 8	3-5/8	3-5/8	3-5/8	-	-	3-5/8	3-5/8	3-5/8	
14 x 8	3	3	3	3	4	3	3	3	
15 x 8	-	3-1/4	3-1/4	3-1/4	-	3-1/4	3-1/4	3-1/4	
16 x 8	2-7/8	3-1/2	2-7/8	3-1/2	2-5/8	2-7/8	2-7/8	2-7/8	
18 x 8	3-1/8	3-1/8	3-1/8	3-1/8	3-1/8	3-1/8	3-1/8	3-1/8	
20 x 8	3-1/2	-	3-1/2	-	-	3-1/2	3-1/2	3-1/2	
22 x 8	4	-	-	-	-	-	-	-	
24 x 8	3-1/2	-	-	-	-	-	-	-	
16 x 10	2-7/8	-	-	-	-	-	-	-	
18 x 10	3-1/8	-	-	-	-	-	-	-	
20 x 10	3-1/2	-	-	-	-	-	-	-	

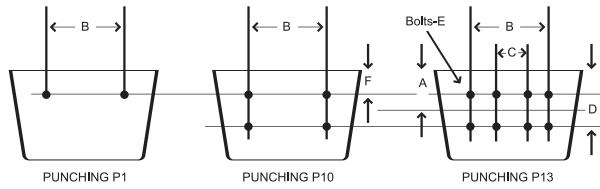
AVAILABLE IN TIGER-TUFF

Chart shows Standard Punching - Special Punching available on request. Please double check all punching with original manufacturer. \* Current and Potential CC-MAX sizes listed.



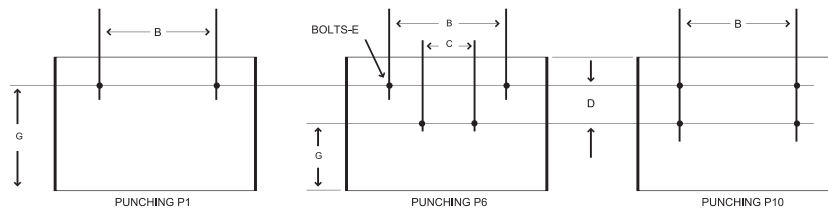
# BUCKET PUNCHING FOR CHAINS

ENGINEERING: BUCKET PUNCHING FOR CHAINS



CENTRIFUGAL DISCHARGE ELEVATOR BUCKETS ON "K" ATTACHMENTS													
CHAIN ATTACHMENT NUMBER	NOMINAL BUCKET SIZE, INCHES						PUNCHING	INCHES					
	TYPES AA, AA-RB		TYPE AC		TYPE SC			A	B	C	D	E	F
	Min.	Max.	Min.	Max.	Min.	Max.							
77-K1	6 X 4	10 X 6	-	-	8 X 6	10 X 8	P1	-	3	-	-	1/4	1
77-K2	6 X 4	10 X 6	-	-	8 X 6	10 X 8	P10	-	3	-	13/16	1/4	1
C 77-K1	6 X 4	10 X 6	-	-	8 X 6	10 X 8	P1	-	3	-	-	3/8	1
78-K1	6 X 4	10 X 6	-	-	8 X 6	10 X 8	P1	-	3-3/8	-	-	1/4	1
H 78-K1	6 X 4	12 X 6	-	-	8 X 6	12 X 8	P1	-	4	-	-	3/8	1
H 78-K2	6 X 4	12 X 6	-	-	8 X 6	12 X 8	P10	-	4	-	1-1/8	3/8	1
C 102B-K2	8 X 5	16 X 7	-	-	8 X 6	16 X 8	P10	-	5-5/16	-	1-3/4	3/8	1
SS 102B-K2	7 X 4-1/2	16 X 7	-	-	8 X 6	16 X 8	P10	-	5-5/16	-	1-3/4	3/8	1
C 102-1/2-K2	8 X 5	16 X 7	-	-	8 X 6	16 X 8	P10	-	5-5/16	-	1-3/4	1/2	1
SS 102-1/2-K2	8 X 5	16 X 7	-	-	8 X 6	16 X 8	P10	-	5-5/16	-	1-3/4	1/2	1
C 110-K2	8 X 5	16 X 7	-	-	8 X 6	16 X 8	P10	-	5-5/16	-	1-3/4	3/8	1
SS 110-K2	8 X 5	16 X 7	-	-	8 X 6	16 X 8	P10	-	5-5/16	-	1-3/4	3/8	1
C111-K2	9 X 6	18 X 8	-	-	10 X 8	16 X 8	P10	-	6-1/4	-	2-5/16	1/2	1
SS 111-K2	10 X 6	18 X 8	-	-	10 X 8	16 X 8	P10	-	6-1/4	-	2-5/16	1/2	1
C 132-K2	12 X 6	20 X 8	-	-	12 X 8	16 X 8	P10	-	7-1/2	-	2-3/4	1/2	1
188-K1	6 X 4	12 X 6	-	-	8 X 6	12 X 8	P1	-	3-3/4	-	-	3/8	1
C 188-K2	6 X 4	14 X 7	-	-	8 X 6	14 X 8	P10	-	4-3/16	-	1-1/4	5/16	1
SS 188-K1	6 X 4	12 X 6	-	-	8 X 6	12 X 8	P1	-	3-3/4	-	-	3/8	1
SS 188-K2	8 X 5	14 X 7	-	-	8 X 6	14 X 8	P10	-	4-3/16	-	1-1/4	5/16	1
SS 856-K2	10 X 6	18 X 10	-	-	10 X 8	16 X 8	P10	-	6-5/16	-	2-1/4	1/2	1
SS 856-K24	-	-	18 X 10	24 X 10	-	-	P10	-	7-1/4	-	2-1/2	5/8	1
SS 2857-K44	-	-	18 X 10	24 X 10	-	-	P13	-	12	-	3-1/2	1/2	1

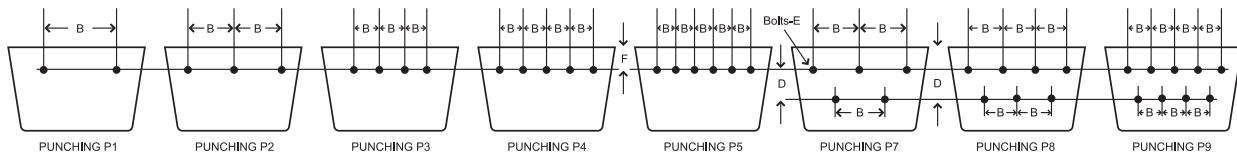
\* Some chain punches may incur additional punching charges. Contact Maxi-Lift for details.



CONTINUOUS ELEVATOR BUCKETS ON "K" ATTACHMENTS														
CHAIN ATTACHMENT NUMBER	NOMINAL BUCKET SIZE, INCHES								PUNCHING	INCHES				
	TYPE HF		TYPE HFO		TYPE MF		TYPE LF			B	C	D	E	G
	Min.	Max.	Min.	Max.	Min.	Max.	Min.	Max.						
C 102B -K2	8 X 5	10 X 5	8 X 5	10 X 5	8 X 5	10 X 5	-	-	P10	5-5/16	-	1-3/4	3/8	1-7/8
SS 102B-K2	8 X 5	10 X 5	8 X 5	10 X 5	8 X 5	10 X 5	-	-	P10	5-5/16	-	1-3/4	3/8	1-7/8
C 102B-1/2-K2	8 X 5	10 X 5	8 X 5	10 X 5	8 X 5	10 X 5	-	-	P10	5-5/16	-	1-3/4	1/2	1-7/8
SS 102B-1/2-K2	8 X 5	10 X 5	8 X 5	10 X 5	8 X 5	10 X 5	-	-	P10	5-5/16	-	1-3/4	1/2	1-7/8
C 110-K2	10 X 7	16 X 8	10 X 7	16 X 8	10 X 7	18 X 8	10 X 7	16 X 8	P10	5-5/16	-	1-3/4	3/8	3-3/8
SS 110-K2	10 X 7	16 X 8	10 X 7	16 X 8	10 X 7	18 X 8	10 X 7	16 X 8	P10	5-5/16	-	1-3/4	3/8	3-3/8
C 111-K2	10 X 6	12 X 6	10 X 6	12 X 6	10 X 6	12 X 6	10 X 6	12 X 6	P10	6-1/4	-	2-5/16	1/2	2-3/32
SS 111-K2	10 X 6	12 X 6	10 X 6	12 X 6	10 X 6	12 X 6	10 X 6	12 X 6	P10	6-1/4	-	2-5/16	1/2	2-3/32
C 132-K2	10 X 7	16 X 8	10 X 7	16 X 8	12 X 7	20 X 8	12 X 7	20 X 8	P10	7-1/2	-	2-3/4	1/2	2-7/8
SS 150PLUS-K2	10 X 7	16 X 8	10 X 7	16 X 8	12 X 7	20 X 8	12 X 7	20 X 8	P10	7-1/2	-	2-3/4	1/2	2-7/8
SS 856-K2	10 X 7	16 X 8	10 X 7	16 X 8	12 X 7	20 X 8	12 X 7	20 X 8	P10	6-5/16	-	2-1/4	3/8	3-1/8

Other Chain Punches Available. Verify bucket punching before ordering.

# BUCKET PUNCHING FOR BELTS



TYPES HF, HFO, MF AND LF CONTINUOUS ELEVATOR BUCKETS FOR BELTS								
BUCKET SIZE , INCHES			Punching	Belt Width Inches	INCHES			
L - Length	P - Projection	D - Depth			B	D	E	F
8	5	7-3/4	P7	9-10	3	1	1/4	3-3/8
8	5	8-1/2	P7	9-10	3	1	1/4	3-3/4
9	6	9-1/4	P7	10	3	1	1/4	4-1/8
10	5	7-3/4	P7	11-12	3-1/2	1	5/16	3-3/8
10	5	8-1/2	P7	11-12	3-1/2	1	5/16	3-3/4
10	6	9-1/4	P7	11-12	3-1/2	1	5/16	4-1/8
10	6	10	P7	11-12	3-1/2	1	5/16	4-1/2
10	7	11-5/8	P7	11-12	3-1/2	1	5/16	5-5/16
10	7	12-1/2	P7	11-12	3-1/2	1	5/16	5-3/4
10	8	11-5/8	P7	11-12	3-1/2	1	5/16	5-5/16
11	6	9-1/4	P7	12	4	1	5/16	4-1/8
12	5	7-3/4	P7	13-14	4-1/2	1	5/16	3-3/8
12	6	9-1/4	P7	13-14	4-1/2	1	5/16	4-1/8
12	6	10	P7	13-14	4-1/2	1	5/16	4-1/2
12	7	11-5/8	P7	13-14	4-1/2	1	5/16	5-5/16
12	7	11-3/4	P7	13-14	4-1/2	1	5/16	5-3/8
12	7	12-1/2	P7	13-14	4-1/2	1	5/16	5-3/4
12	8	11-5/8	P7	13-14	4-1/2	1	5/16	5-5/16
12	8	12-1/2	P7	13-14	4-1/2	1	5/16	5-3/4
14	7	11-5/8	P8	15-16	4	1	5/16	5-5/16
14	7	12-1/2	P8	15-16	4	1	5/16	5-3/4
14	8	11-5/8	P8	15-16	4	1	5/16	5-5/16
14	8	11-3/4	P8	15-16	4	1	5/16	5-3/8
14	8	12-1/2	P8	15-16	4	1	5/16	5-3/4
16	7	11-3/4	P8	18	4-1/2	1	5/16	5-3/8
16	8	11-5/8	P8	18	4-1/2	1	5/16	5-5/16
16	8	12-1/2	P8	18	4-1/2	1	5/16	5-3/4
16	12	17-5/8	P8	18	4-1/2	1	5/16	8-5/16
16	12	18-5/8	P8	18	4-1/2	1	5/16	8-13/16
18	8	11-5/8	P8	20	5	1	5/16	5-5/16
18	10	15	P8	20	5	1	5/16	7
20	8	11-5/8	P9	22	4	1	5/16	5-5/16
20	12	17-5/8	P9	22	4	1	5/16	8-5/16
20	12	18-5/8	P9	22	4	1	5/16	8-13/16
24	10	11-5/8	P9	26	5	1	5/16	5-5/16
24	12	17-5/8	P9	26	5	1	5/16	8-5/16
24	12	18-5/8	P9	26	5	1	5/16	8-13/16

All plastic Maxi-Tuff MF Buckets that have a depth of 11-1/2", 11-5/8" or 11-3/4" will be punched with a 5-5/16" down dimension (F).

TYPES AA AND TIGER-TUFF INDUSTRIAL CENTRIFUGAL DISCHARGE ELEVATOR BUCKETS FOR BELTS						
NOMINAL BUCKET LENGTH INCHES	Punching	Belt Width Inches	B	D	E	F
3	P1	4	1-3/8	-	1/4	1
4	P1	5	2-5/16	-	1/4	1
5	P1	6	3-3/16	-	1/4	1
6	P1	7-8	4-3/8	-	1/4	1
7	P2	8	2-1/2	-	1/4	1
8	P7	9-10	3	1	1/4	1
9	P7	10	3	1	1/4	1
10	P7	11-12	3-1/2	1	5/16	1
11	P7	12	4	1	5/16	1
12	P7	13-14	4-1/2	1	5/16	1
13	P8	14	3-1/2	1	5/16	1
14	P8	15-16	4	1	5/16	1
15	P8	16	4	1	5/16	1
16	P8	18	4-1/2	1	5/16	1
17	P8	18	4-1/2	1	5/16	1
18	P8	20	5	1	5/16	1
19	P9	20	4	1	5/16	1
20	P9	22	4	1	5/16	1
21	P9	22	4-1/2	1	5/16	1
22	P9	24	4-1/2	1	5/16	1
23	P9	24	5	1	5/16	1
24	P9	26	5	1	5/16	1

**Other Chain Punches Available.** Verify bucket punching before ordering.

