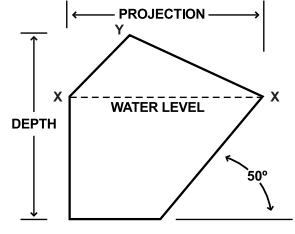
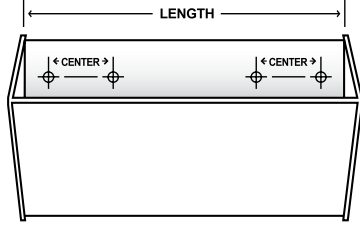
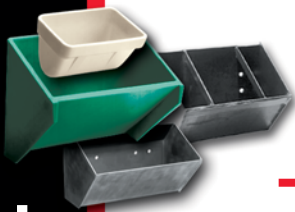


Industrial Welded Metal Elevator Buckets

AC Welded Steel



MOUNTING HOLES AND VENTING TO YOUR SPECIFICATIONS

AC Welded Steel

BUCKET SIZE, INCHES				WEIGHT, LBS.		CAPACITY, CU. FT.*	
Bucket Size	Length	Proj.	Depth	3/16" Steel	1/4" Steel	Filled to Line X-X	Filled to Line X-Y
12 x 8	12	8	8-1/2	18.25	24.30	.231	.303
14 x 8	14	8	8-1/2	20.30	27.00	.271	.356
16 x 8	16	8	8-1/2	22.48	29.98	.311	.408
18 x 10	18	10	10-1/2	31.15	38.95	.488	.691
20 x 10	20	10	10-1/2	33.68	42.10	.542	.768
24 x 10	24	10	10-1/2	39.67	52.69	.651	.921
27 x 12	27	12	12-1/2	53.84	71.46	1.072	1.474

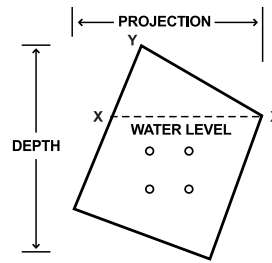
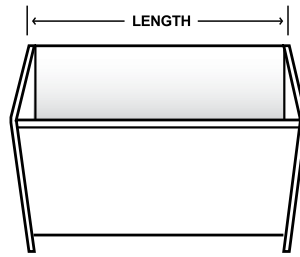
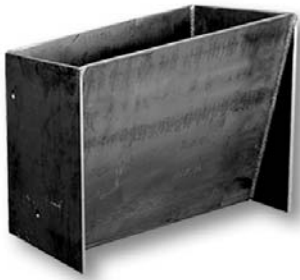
- * Weights are estimated and do not include bolt reinforcing plates. Bolt reinforcing plates are recommended if less than 8 bolts are used. Vent holes in bottom are optional in style AC buckets.
- Buckets generally utilize a 3-piece construction; the end caps fit on the outside of the body and are continuously welded to the body. There generally is no taper on the sides of the bucket.
- There is approximately a 50° angle from the horizontal to the front plate.

- High front for greater capacity
- Hooded back for closer spacing
- Typical in cement, gypsum or other powdery materials
- Mounted on chain or belt
- Options: carbon steel, aluminum, stainless steel, AR plate, wear lips, hardened surface and hard bead weld
- Venting available for clean filling and discharge
- Buckets are continuously welded
- Buckets available in 14ga, 12ga, 10ga, 7ga, 1/4", 5/16", 3/8", 1/2" steel

Custom Elevator Buckets Built to Your Specifications.

Industrial Welded Metal Elevator Buckets

SC Welded Steel



MOUNTING HOLES AND VENTING TO YOUR SPECIFICATIONS

SC Welded Steel

BUCKET SIZE, INCHES				WEIGHT, LBS.			CAPACITY, CU. FT.*	
Bucket Size	Length	Proj.	Depth	10 Gauge Steel	3/16" Steel	1/4" Steel	Filled to Line X-X	Filled to Line X-Y
12 x 8 x 11	12	8-3/4	11-5/8	22	29	39	.35	.54
14 x 8 x 11	14	8-3/4	11-5/8	23	31	41	.41	.63
16 x 8 x 11	16	8-3/4	11-5/8	25	34	45	.46	.72
16 x 12 x 17	16	12	17-5/8	43	58	76	1.11	1.55
18 x 8 x 11	18	8-3/4	11-5/8	27	36	48	.52	.81
20 x 8 x 11	20	8-3/4	11-5/8	29	39	52	.58	.90
20 x 12 x 17	20	12	17-5/8	49	67	88	1.40	1.94
24 x 12 x 17	24	12	17-5/8	55	75	104	1.68	2.33
30 x 12 x 17	30	12	17-5/8	65	88	117	2.11	2.91
36 x 12 x 17	36	12	17-5/8	73	99	132	2.53	3.49

* Weights are estimated.

* Note: Actual capacity depends on angle of material handled and inclination of elevator. Weight is dependent upon metal gauge used.

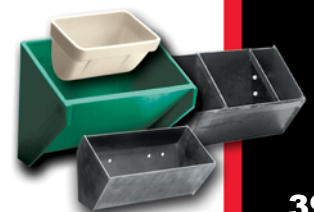
• Buckets generally utilize a 3-piece construction; the end caps fit on the outside of the body and are continuously welded to the body. There generally is no taper on the sides of the bucket.

- Mounted between two strands of chain
- Suitable for the heaviest materials
- Designed for super capacity elevators
- Design offers increased capacity
- Typical in aggregate and cement applications
- Options: carbon steel, plated stainless steel, aluminum, AR plate, wear lips, hardened surface and hard bead weld
- Buckets available in 14ga, 12ga, 10ga, 7ga, 1/4", 5/16", 3/8", 1/2" steel
- Buckets are continuously welded
- See punching for chain in back of catalog

Custom Elevator Buckets Built to Your Specifications.

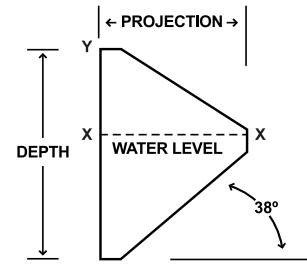
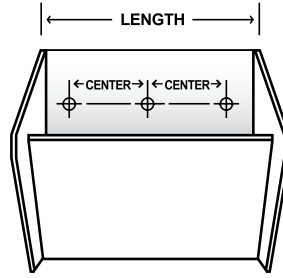
Call: 1-800-527-0657 or Visit Us Online at: www.maxilift.com

16400 Midway Rd Dallas, TX 75001 • Ph: (972)735-8855 Fx: (972)735-8896 • info@maxilift.com



Industrial Welded Metal Elevator Buckets

MF (Medium Front) Continuous Welded Steel



MOUNTING HOLES AND VENTING TO YOUR SPECIFICATIONS

MF (Medium Front) Continuous Welded Steel

BUCKET SIZE, INCHES				WEIGHT, LBS.				CAPACITY, CU. FT.*	
Bucket Size	Length	Proj.	Depth	12 Gauge Steel	10 Gauge Steel	3/16" Steel	1/4" Steel	Filled to Line X-X	Filled to Line X-Y
8 x 5 x 7	8	5	7-3/4	5.10	6.30	8.70	-	.040	.070
9 x 6 x 9	9	6	9-1/4	6.70	8.60	11.90	-	.068	.118
10 x 5 x 7	10	5	7-3/4	5.90	7.40	10.20	-	.050	.090
10 x 6 x 9	10	6	9-1/4	7.20	9.20	12.70	-	.075	.130
10 x 7 x 11	10	7	11-5/8	9.30	11.90	16.50	-	.103	.180
10 x 8 x 11	10	8	11-5/8	9.90	12.80	17.80	23.20	.135	.235
11 x 6 x 9	11	6	9-1/4	7.70	9.90	13.60	18.13	.081	.145
12 x 6 x 9	12	6	9-1/4	8.10	10.50	14.50	19.33	.091	.155
12 x 7 x 11	12	7	11-5/8	10.40	13.40	18.60	24.80	.125	.218
12 x 8 x 11	12	8	11-5/8	11.20	14.40	20.00	26.10	.163	.275
14 x 7 x 11	14	7	11-5/8	11.60	14.90	20.70	27.60	.145	.253
14 x 8 x 11	14	8	11-5/8	12.40	16.00	22.20	29.10	.190	.325
16 x 8 x 11	16	8	11-5/8	13.70	17.60	24.50	32.00	.220	.375
16 x 12 x 17	16	12	17-5/8	-	29.90	40.60	54.80	.490	.852
18 x 8 x 11	18	8	11-5/8	-	19.20	26.70	35.00	.250	.420
18 x 10 x 15	18	10	15	-	25.90	36.10	47.30	.379	.662
20 x 8 x 11	20	8	11-5/8	-	20.80	29.00	38.00	.270	.470
20 x 12 x 17	20	12	17-5/8	-	34.80	48.50	63.90	.620	1.075
24 x 10 x 11	24	10	11-5/8	-	27.40	38.20	50.00	.512	.850
24 x 12 x 17	24	12	17-5/8	-	39.80	55.40	73.10	.745	1.295

* Weights are estimated

- There is approximately a 38° angle from the horizontal to the front plate.
- Buckets generally utilize a 2-piece construction; a front plate inserts between a press-formed body and is continuously welded to the body on the outside joint.

- Continuous discharge for gentler handling
- Mounted on chain or belt
- Suitable for fluffy and free-flowing materials or materials requiring gentler handling
- Options: carbon steel, stainless steel, aluminum, AR plate, wear lips, hardened surface and hard bead weld
- Buckets are continuously welded
- Buckets available in 14ga, 12ga, 10ga, 7ga, 1/4", 5/16", 3/8", 1/2" steel
- See punching for chain and belt in back of catalog

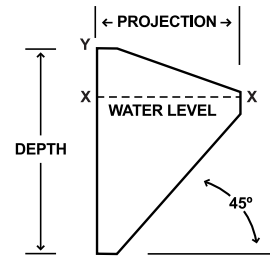
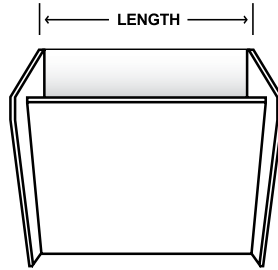
Custom Elevator Buckets Built to Your Specifications.

Call: 1-800-527-0657 or Visit Us Online at: www.maxlift.com

16400 Midway Rd Dallas, TX 75001 • Ph: (972)735-8855 Fx: (972)735-8896 • info@maxlift.com

Industrial Welded Metal Elevator Buckets

HF (High Front) Continuous Welded Steel



MOUNTING HOLES AND VENTING TO YOUR SPECIFICATIONS

HF (High Front) Continuous Welded Steel

BUCKET SIZE, INCHES				WEIGHT, LBS.				CAPACITY, CU. FT.*	
Bucket Size	Length	Proj.	Depth	12 Gauge Steel	10 Gauge Steel	3/16" Steel	1/4" Steel	Filled to Line X-X	Filled to Line X-Y
8 x 5 x 7	8	5	7-3/4	4.90	6.20	8.50	-	.052	.080
10 x 5 x 7	10	5	7-3/4	5.70	7.30	10.00	-	.065	.100
10 x 6 x 9	10	6	9-1/4	7.20	9.10	12.60	-	.098	.145
10 x 7 x 11	10	7	11-5/8	9.10	11.60	16.00	20.90	.130	.190
12 x 6 x 9	12	6	9-1/4	8.30	10.40	14.40	19.20	.115	.175
12 x 7 x 11	12	7	11-5/8	10.30	13.20	18.20	23.90	.155	.240
12 x 8 x 11	12	8	11-5/8	11.30	14.30	20.00	26.00	.205	.295
14 x 7 x 11	14	7	11-5/8	11.50	14.80	20.40	26.70	.184	.280
14 x 8 x 11	14	8	11-5/8	12.60	16.00	22.40	28.10	.240	.350
16 x 8 x 11	16	8	11-5/8	13.90	17.70	24.70	32.20	.275	.395
16 x 12 x 17	16	12	17-5/8	-	30.30	41.90	55.00	.635	.900
18 x 10 x 15	18	10	15	-	26.20	36.10	47.70	.485	.720
20 x 12 x 17	20	12	17-5/8	-	35.10	49.10	64.60	.800	1.150
24 x 12 x 17	24	12	17-5/8	-	40.50	56.30	74.30	.960	1.305

* Weights are estimated

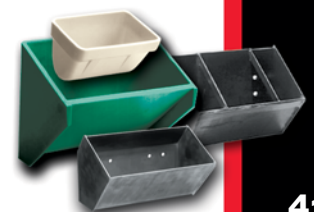
- There is approximately a 45° angle from the horizontal to the front plate.
- Buckets generally utilize a 2-piece construction; a front plate inserts between a press-formed body and is continuously welded to the body on the outside joint.

- High front for increased capacity
- Mounted on chain or belt
- Reduces damage to materials
- Options: carbon steel, plated stainless steel, aluminum, AR plate, wear lips, hardened surface and hard bead weld
- Buckets are continuously welded
- See punching for chain and belt in back of catalog

Custom Elevator Buckets Built to Your Specifications.

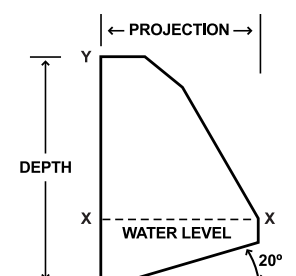
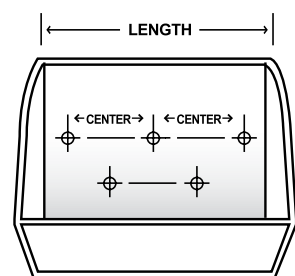
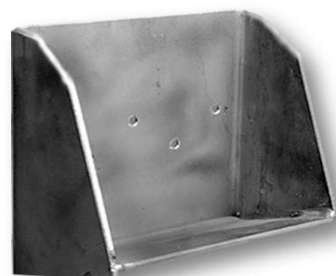
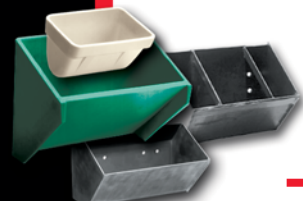
Call: 1-800-527-0657 or Visit Us Online at: www.maxilift.com

16400 Midway Rd Dallas, TX 75001 • Ph: (972)735-8855 Fx: (972)735-8896 • info@maxilift.com



Industrial Welded Metal Elevator Buckets

LF (Low Front) Continuous Welded Steel



MOUNTING HOLES AND VENTING TO YOUR SPECIFICATIONS

LF (Low Front) Continuous Welded Steel

BUCKET SIZE, INCHES				WEIGHT, LBS.				CAPACITY, CU. FT.*	
Bucket Size	Length	Proj.	Depth	12 Gauge Steel	10 Gauge Steel	3/16" Steel	1/4" Steel	Filled to Line X-X	Filled to Line X-Y
10 x 6 x 9	10	6	9-1/4	6.80	8.80	12.10	-	.035	.168
10 x 7 x 11	10	7	11-5/8	8.50	10.80	15.10	-	.050	.242
12 x 6 x 9	12	6	9-1/4	7.80	10.00	13.80	-	.042	.201
12 x 7 x 11	12	7	11-5/8	9.60	12.30	17.10	22.80	.060	.302
12 x 8 x 11	12	8	11-5/8	11.20	14.40	20.10	26.80	.075	.347
14 x 7 x 11	14	7	11-5/8	10.70	13.70	19.10	25.50	.070	.345
16 x 8 x 11	16	8	11-5/8	13.60	17.40	24.30	32.40	.101	.463
16 x 12 x 17	16	12	17-5/8	-	29.30	40.70	53.60	.229	1.093
18 x 10 x 15	18	10	15	-	25.40	35.00	46.50	.183	.494
20 x 8 x 11	20	8	11-5/8	-	20.50	28.50	38.00	.126	.573
20 x 12 x 17	20	12	17-5/8	-	33.90	47.10	62.00	.287	1.365
24 x 12 x 17	24	12	17-5/8	-	38.50	53.50	70.50	.346	1.643

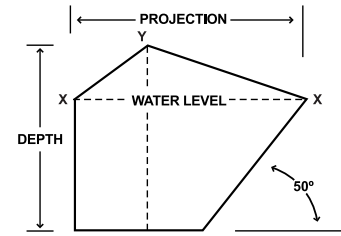
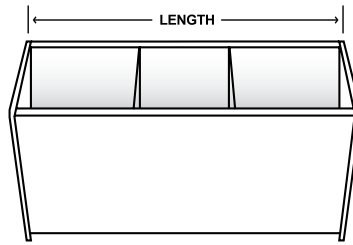
- * Weights are estimated.
- * Note: Actual capacity depends on angle of material handled and inclination of elevator. Weight is dependent upon metal gauge used.
- There is approximately a 20° angle from the horizontal to the front plate
- Buckets generally utilize a 2-piece construction; a front plate inserts between a press-formed body and is continuously welded to the body on the outside joint.

- Designed for inclined elevators
- Mounted on chain or belt
- Suitable for fine or wet materials
- Buckets are continuously welded
- Options: carbon steel, plated stainless steel, aluminum, AR plate, wear lips, hardened surface and hard bead weld
- Buckets available in 14ga, 12ga, 10ga, 7ga, 1/4", 5/16", 3/8", 1/2" steel
- See punching for chain and belt in back of catalog

Custom Elevator Buckets Built to Your Specifications.

Industrial Welded Metal Elevator Buckets

ACS Welded Steel



MOUNTING HOLES AND VENTING TO YOUR SPECIFICATIONS

ACS Welded Steel

BUCKET SIZE, INCHES				WEIGHT, LBS.			CAPACITY, CU. FT.*	
Bucket Size	Length	Proj.	Depth	Steel		Aluminum	Filled to Line X-X	Filled to Line X-Y
				With Lip	W/O Lip			
14 x 12 x 11	14	12	11-3/8	36	32	15.30	.37	.53
16 x 12 x 11	16	12	11-3/8	39	35	17.20	.44	.62
18 x 12 x 11	18	12	11-3/8	42	37	19.00	.51	.71
21 x 14 x 13	21	14	13-3/8	56	51	25.30	.78	1.08
24 x 14 x 13	24	14	13-3/8	62	56	27.30	.93	1.28
27 x 15 x 13	27	15	13-3/8	72	65	32.30	1.29	1.62
30 x 15 x 13	30	15	13-3/8	84	77	37.30	1.47	2.84

* Weights are estimated.

* 3/16" thick metal Elevator Bucket. Other thicknesses available.

- There is approximately a 50° angle from the horizontal to the front plate
- Buckets generally utilize a 7-piece construction consisting of end plates, a body, interior braces and bearing plate; the end caps fit on the inside edge of the body and are continuously welded to the body. There is no taper on the sides of the bucket.
- The bearing plates are tack welded to the inside of the body.

- High front, saddlebag or wrap-around feature increases capacity
- Center braces and bearing plates standard
- Buckets are continuously welded
- Hooded back permits closer bucket spacing
- Options: carbon steel, plated stainless steel, aluminum, AR plate, wear lips, hardened surface and hard bead weld
- Suitable for handling abrasive materials such as cement, aggregate, etc.
- Buckets available in 14ga, 12ga, 10ga, 7ga, 1/4", 5/16", 3/8", 1/2" steel
- See punching for chain in back of catalog

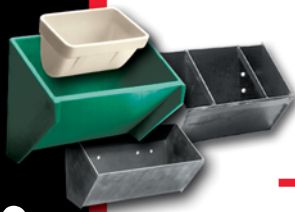
Custom Elevator Buckets Built to Your Specifications.

Call: 1-800-527-0657 or Visit Us Online at: www.maxilift.com

16400 Midway Rd Dallas, TX 75001 • Ph: (972)735-8855 Fx: (972)735-8896 • info@maxilift.com



INDUSTRIAL BUCKETS: ACS WELDED STEEL



Industrial Welded Metal Elevator Buckets

Welded Steel



AC WELDED STEEL



AA WELDED STEEL



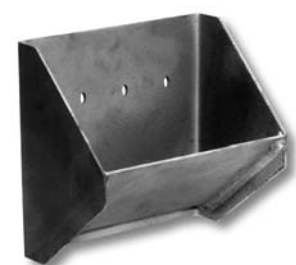
HF WELDED STEEL



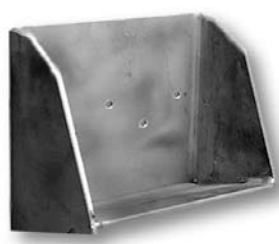
SC WELDED STEEL



ACS WELDED STEEL

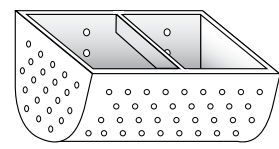
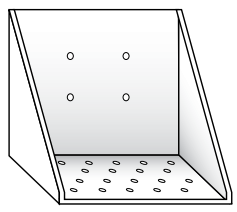
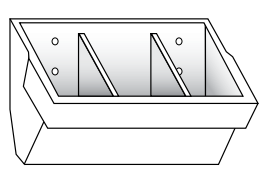


MF WELDED STEEL



LF WELDED STEEL

**Custom Elevator Buckets Built to Your Specifications.
Call Us For a Custom Quote.**



Providing customized solutions to solve your problems is important to Maxi-Lift. With our large custom metal fabrication shop, we can build products in almost any size, style, or design. Our engineers can work from your drawings, create CAD drawings for approval or copy a sample bucket. We can recommend a combination of materials to help solve wear and performance problems in difficult applications.

Call: 1-800-527-0657 or Visit Us Online at: www.maxilift.com

16400 Midway Rd Dallas, TX 75001 • Ph: (972)735-8855 Fx: (972)735-8896 • info@maxilift.com