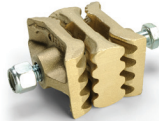


BELT SPLICE TECHNICAL DATA SHEET

Maxi-Lift Inc.
ELEVATOR SPLICES



MAXI-SPLICE®



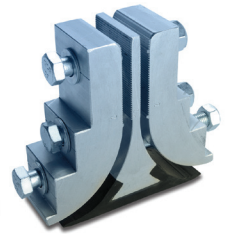
MAXI-SPLICE®



**MAXI-SPLICE®
ULTRA**



**MAXI-SPLICE®
SUPER**



TITAN
THE ULTIMATE BELT SPLICE

PART DETAILS	Product	MAXI-SPLICE	MAXI-SPLICE	MAXI-SPLICE	MAXI-SPLICE	MAXI-SPLICE
	Brand	CI	AB	ULTRA	SUPER	TITAN
	Part No.	CI5	AB5	ULTRA5	SUPER5	TITAN
SPLICE CONSTRUCTION	Color	Silver	Manganese Bronze	Silver	Silver	Silver
	Construction	3 Piece Mechanical Clamping Device	3 Piece Mechanical Clamping Device	3 Piece Mechanical Clamping Device with NBR (Nitrile) Rubber Wedge	3 Piece Mechanical Clamping Device with NBR (Nitrile) Rubber Wedge	3 Piece Mechanical Clamping Device with HNBR Rubber Wedge
	Metal Material	Galvanized Cast Iron	Manganese Bronze	Aluminum	Aluminum	Aluminum
	Metal Description	Ferrous Cast Iron	Non-Ferrous Bronze	High Grade, Lightweight Aluminum	High Grade, Lightweight Aluminum	High Grade, Lightweight Aluminum
	Rubber Material	None	None	Replaceable NBR Rubber Wedge	Replaceable NBR Rubber Wedge	Replaceable HNBR Rubber Wedge
SPLICE SPECIFICATIONS	Weight (lbs.)	2.60	2.90	1.93	4.80	Per Application
	Length	3"	3"	4-1/2"	6-1/4"	6"
	Width	2"	2"	2-1/2"	3"	Per Application
	PIW Rated	Up to 600 PIW Tensile	Up to 800 PIW Tensile	Up to 800 PIW Tensile	800-1200 PIW Tensile	Over 1200 PIW
	Recommended Belt Thickness	1/4" to 5/8"	1/4" to 5/8"	1/4" to 5/8"	3/8" to 3/4"	Per Application
BOLT SPECIFICATIONS	No of Bolts	1	1	1	2	Per Application
	Bolt Grade	Grade 5 Hex Head Bolt	Grade 5 Hex Head Bolt	Grade 5 Hex Head Bolt	Grade 5 Hex Head Bolt	M16 10.9 Hex Head Bolt
	Bolt Diameter (Inches)	1/2"	9/16"	5/8"	3/4"	Per Application
	Bolt Length (Inches)	5"	5"	4-1/2"	5" and 5-1/2"	Per Application
	Washers	Yes	Yes	Yes	Yes	Yes
	Nuts	Nylock	Nylock	Nylock	Nylock	Oval Lock Nut
	Recommended Torque *	75 ft./lbs.	100 ft./lbs.	125 ft./lbs.	150 ft./lbs.	Per Application
Template Tape Included	Yes	Yes	Yes	Yes	Requires Special Template	
SHIMS	Required Shims Per Belt Thickness	N/A	N/A	Under 5/16" - No Shims 5/16" to 3/8" - 1 Shim 3/8" to 5/8" - 2 Shims	Under 1/2" - No Shims 1/2" to 5/8" - 1 Shim 5/8" to 3/4" - 2 Shims	N/A
TEMPERATURE RATINGS	Max. Operating Temps	600° F / 350° C	500° F / 260° C	200° F / 93° C (NBR Rubber Wedge Limiting Factor) - Alternative Wedges Available for Higher Temperatures	200° F / 93° C (NBR Rubber Wedge Limiting Factor) - Alternative Wedges Available for Higher Temperatures	320° F / 160° C (HNBR Hydrogenated Nitrile Butadiene Rubber Wedge Limiting Factor)
	Nylock Nut Max. Temp	250° F	250° F	250° F	250° F	320° F
MINIMUM HEAD PULLEY	Agricultural (High Speed) **	12"	12"	24"	30"	48"
	Industrial (Centrifugal/Gravity)	12"	12"	20"	36"	48"
BUCKET PROJECTION	Minimum Recommended	4"	4"	5"	7"	8"
FEATURES/BENEFITS		Strong, Standard, Mechanical Splice	Non-Sparking, Non-Corroding, Non-Rusting	Non-Sparking, Non-Corroding, Non-Rusting, Longer Belt Life	Non-Sparking, Non-Corroding, Non-Rusting, Longer Belt Life	Non-Sparking, Non-Corroding, Non-Rusting, Longer Belt Life

* When torquing splice bolts, do not use impact wrench as over-torquing will cause both belt and splice failure. In addition, under torquing could lead to insufficient clamp pressure and could create splice failure, and tracking issues. ** On smaller pulleys, the metal shims must be installed correctly, or the rubber wedge could fail. Customer is responsible for checking the splices on a consistent basis for correct torque during splice operation. Do not reuse hardware (bolts, nylock or oval nuts) when reinstalling splices. Please always read Maxi-Lift Installation Instructions and apply template tape when installing splices for correct installation. See website for more details.

Do not use Maxi-Lift splices on any type of belt manlifts.