

Fertilizer Plant Cuts Wear, Eliminates Down Legging with TIGER-TUFF® Elevator Buckets

Ivan Crawford stops next to the bucket elevator and tunes his ears to the quiet fertilizer leg. Not sure the elevator is running, the loader operator dumps some potash into the load-out hopper. As the potash reaches the buckets, he can hear the material shooting up the leg and knows his elevator is running better than ever.

Quiet, efficient operation is a welcome change at Countrymark Fertilizer in Fostoria, Ohio. Sounds of downlegging potash and diammonium phosphate, coupled with the clang of stainless steel digger buckets, made the plant's fertilizer leg sound like a worn-out windmill in a West Texas sandstorm...but not anymore.

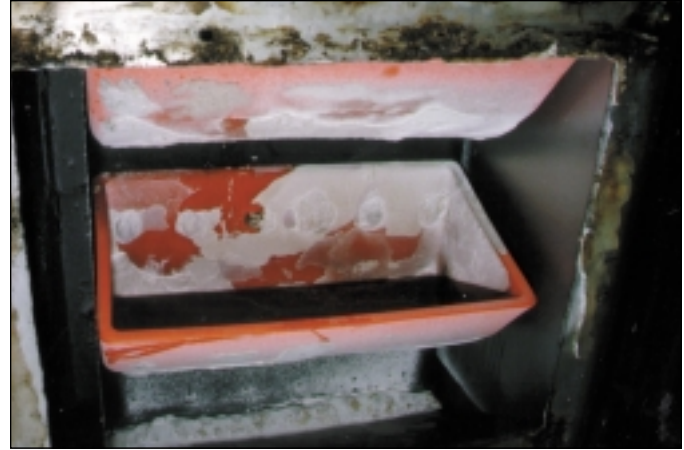
In 1949, Ohio Farmers built an ammoniation plant to supplement their fertilizer needs in the highly agricultural region. It has been producing high quality fertilizer ever since. The plant currently mixes and sells tens of thousands of tons annually. The combinations of potash and diammonium phosphate have taken their toll on equipment around the plant, including its elevators and buckets.

"We were changing elevator buckets every twelve to eighteen months," said Terry Nye, Countrymark's maintenance supervisor. The buckets they were replacing were the popular blue "cchd" style polyethylene. This was the brand

of bucket that came as original equipment when the leg was purchased. Unfortunately, they were not getting the kind of life Countrymark required despite using stainless steel diggers to supplement the "cchd" buckets. The abrasive fertilizer components cause too much wear, creating a loss of capacity and eventual bucket failure.

In June 1997, Terry Arrick, plant manager, decided it was time to look for a solution. He called his distributor, and the search began. The distributor suggested they take a look at the new TIGER-TUFF® maximum duty elevator bucket from Maxi-Lift. The TIGER-TUFF® is designed with more material in all of the high wear areas. Formulated to wear less, elevate more, and outlive any other high speed grain bucket, the TIGER-TUFF® looked like it could solve the wear problem.

Arrick placed the order with Summers Rubber. The maintenance crew installed the new buckets in July 1997. The 10-year-old Burton Mixer elevator has never performed better. Designed with an 18" head pulley, the buckets travel at a rate of 568 feet per minute, carrying a little more than 2 tons during that span. With the speed right off most engineering charts, the leg used to downleg a lot using the blue "cchd" cups. "The new buckets virtually eliminated the downlegging we were experiencing," said Nye. Nye also removed the expensive stainless steel dig-



The Tiger-Tuff's superior design stands up to the abrasive fertilizer application.

ger buckets Countrymark was using because they became unnecessary with the thicker lipped TIGER-TUFF®.

Recent inspection of the buckets reinforced Arrick's decision to buy and install the TIGER-TUFF®'s. After months of use, the orange buckets show no significant wear. TIGER-TUFF®'s have made a believer out of Crawford, who stated, "Those buckets are at least 100% better than the Tapco's."

Performing beyond their expectations, the TIGER-TUFF® solved their tough application problem. Crawford is reminded how good they are every time he passes the quiet operating elevator and wonders, "Is that thing still running?" Then he just smiles again and processes another load.

Maxi-Lift, Inc. makes 10 sizes of TIGER-TUFF® maximum duty elevator buckets.

For more information, call 800-527-0657 or write to:

P.O. Box 700008
Dallas TX 75370-0008

Check out our website:
www.maxilift.com



Nye and Crawford standing next to the Burton Mixer elevator.